

TOP biobank

Norwegian Centre for Mental Disorders Research
Lavinia Athanasiu, PhD

Design

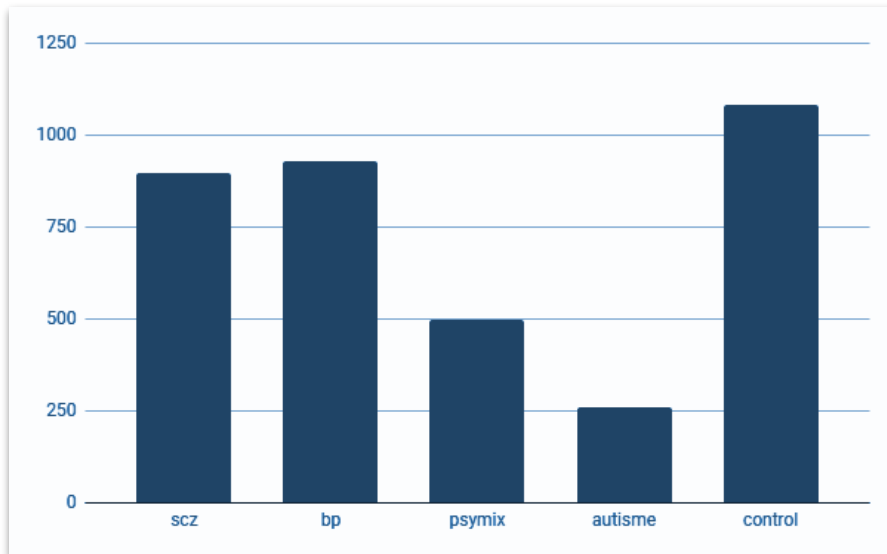
- Longitudinal
- Recruitment: outpatient and inpatient psychiatric units across Norwegian Hospitals
- Number of participants/donors: 4100
- Started in 2003, concession until 2050

Biobank description

- Biofluids including:
 - Blood, DNA, RNA, Plasma, Serum, PAXGene RNA, Urine, Saliva
- Skin biopsy - stem cell
- Hair - cortisol
- Multiple visit collection: baseline, 1 year follow up, 10 year follow up
- whole-genome genotyped and NGS at deCODE genetics, Illumina platforms
- RNA chip, Affymetrix

Clinical and Phenotypic data

Number of participants

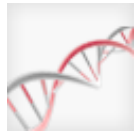


All participants consented to use Registry data and to be recontacted

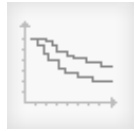
- Data Collection

- clinical
- NK
- SCID
- EEG
- MR
- Genotyping/sequencing
- Transcriptomics
- Metabolomics

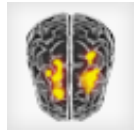
Research focus



Genetics



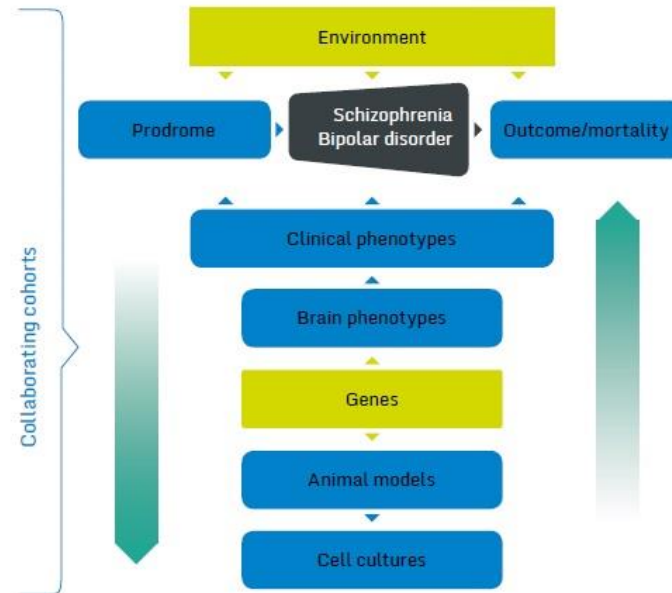
Outcome prediction



Brain imaging



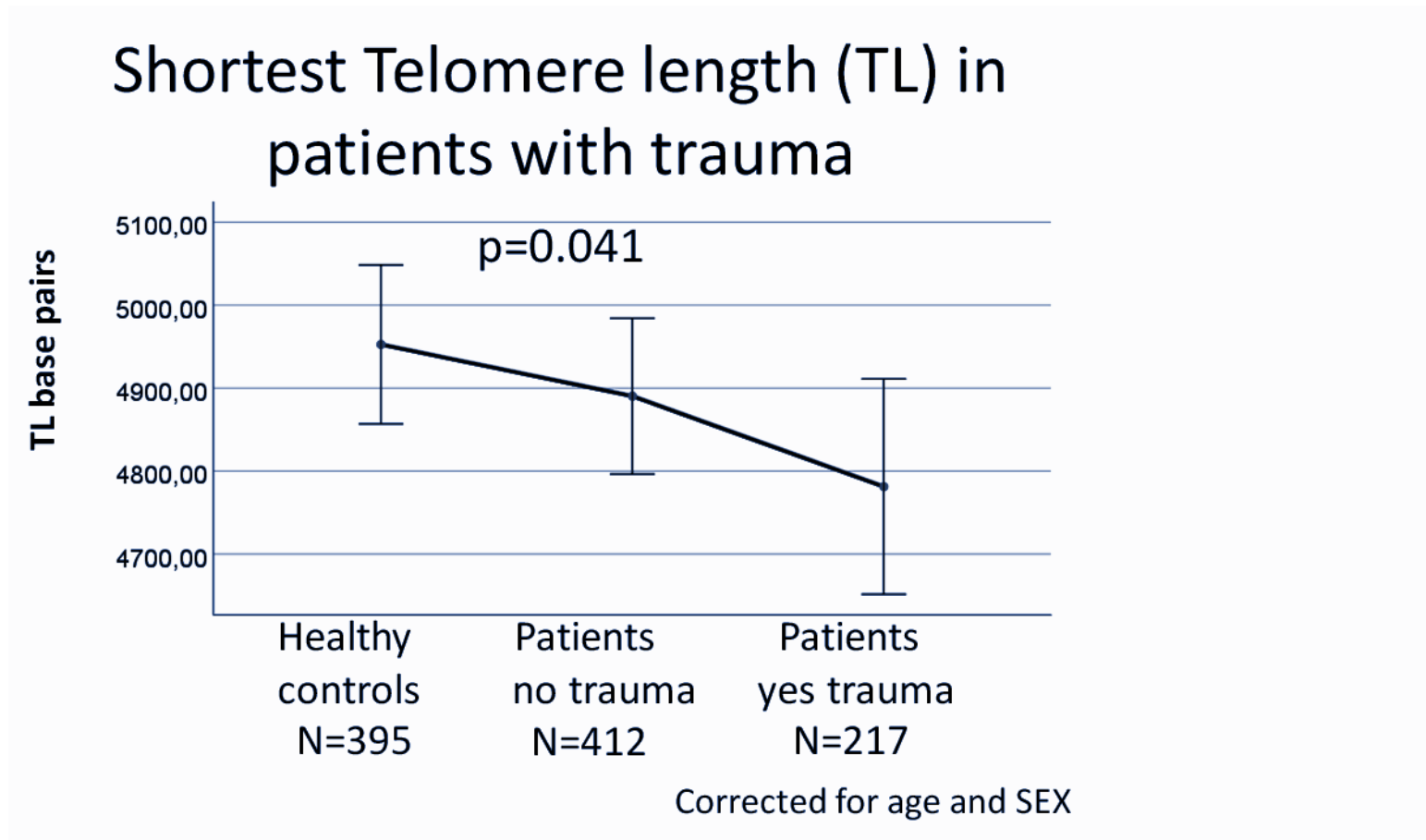
Antipsychotic medication



- Collaborations:

- PGC
- ENIGMA
- IMAGEMEND
- ECNP Schizophrenia N
- ECNP Bipolar Disorders N.
- COGENT
- PsychDPC
- MoBa
- DemGene
- deCODE
- International consortium on Hallucination Research

Case-study



How to collaborate?

- All access to the samples in the biobank goes through Head of lab at NORMENT and must be approved by PIs.
- All sensitive data must be stored on TSD (UiO) or offline.
- <http://www.med.uio.no/norment>
- Address: Oslo University Hospital, Building 49, Tlf: 23027350
- For collaboration please contact Administrative manager Åshild Maria Eftervåg a.m.eftervag@medisin.uio.no