

# **Looking Ahead: NTNU's strategies and means for Europe and Horizon 2020**

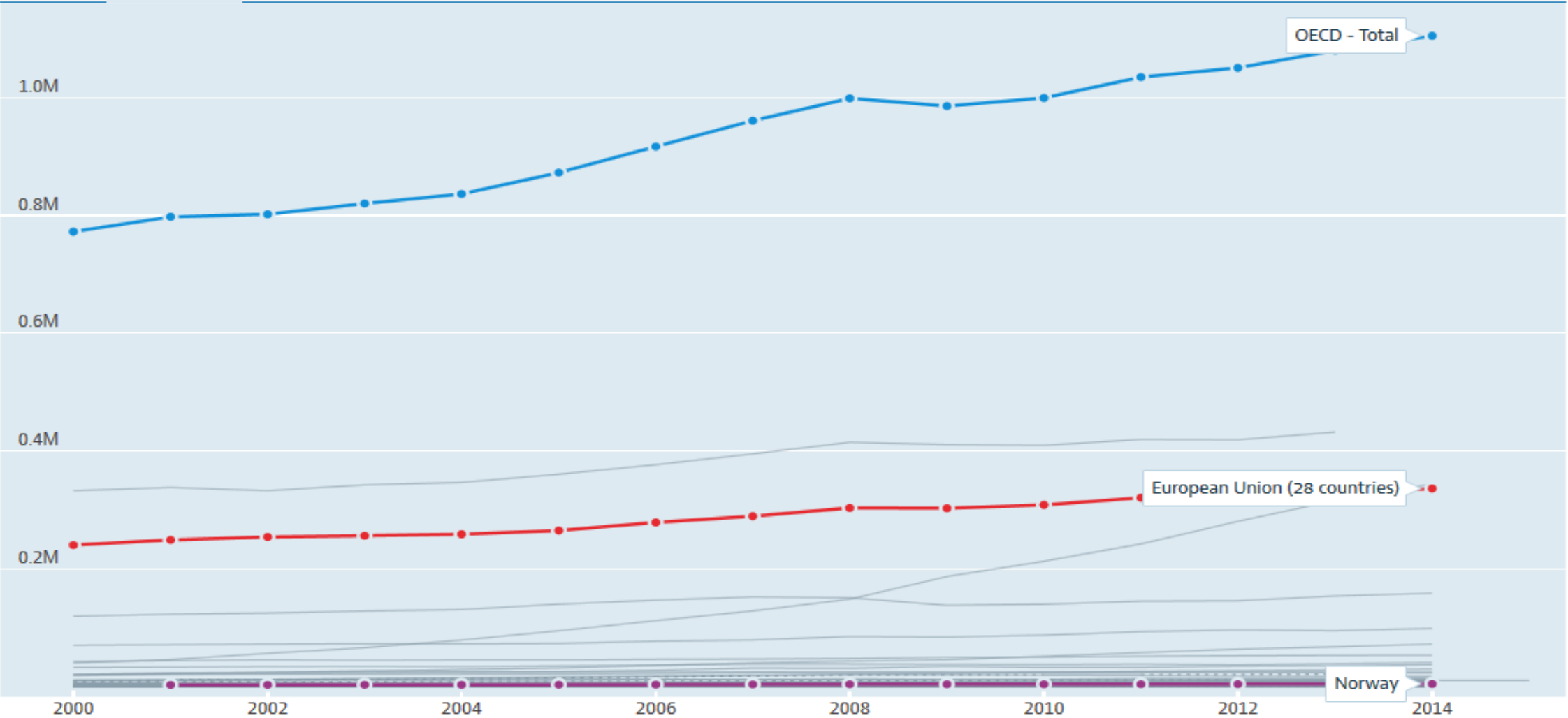
NTNU and UiB Network Conference  
in Brussels 3 October 2016

Nina Sindre, Coordinator of International Affairs, NTNU

Gross domestic spending on R&D Total, Million US dollars, 2000 – 2015

Source: Main Science and Technology Indicators

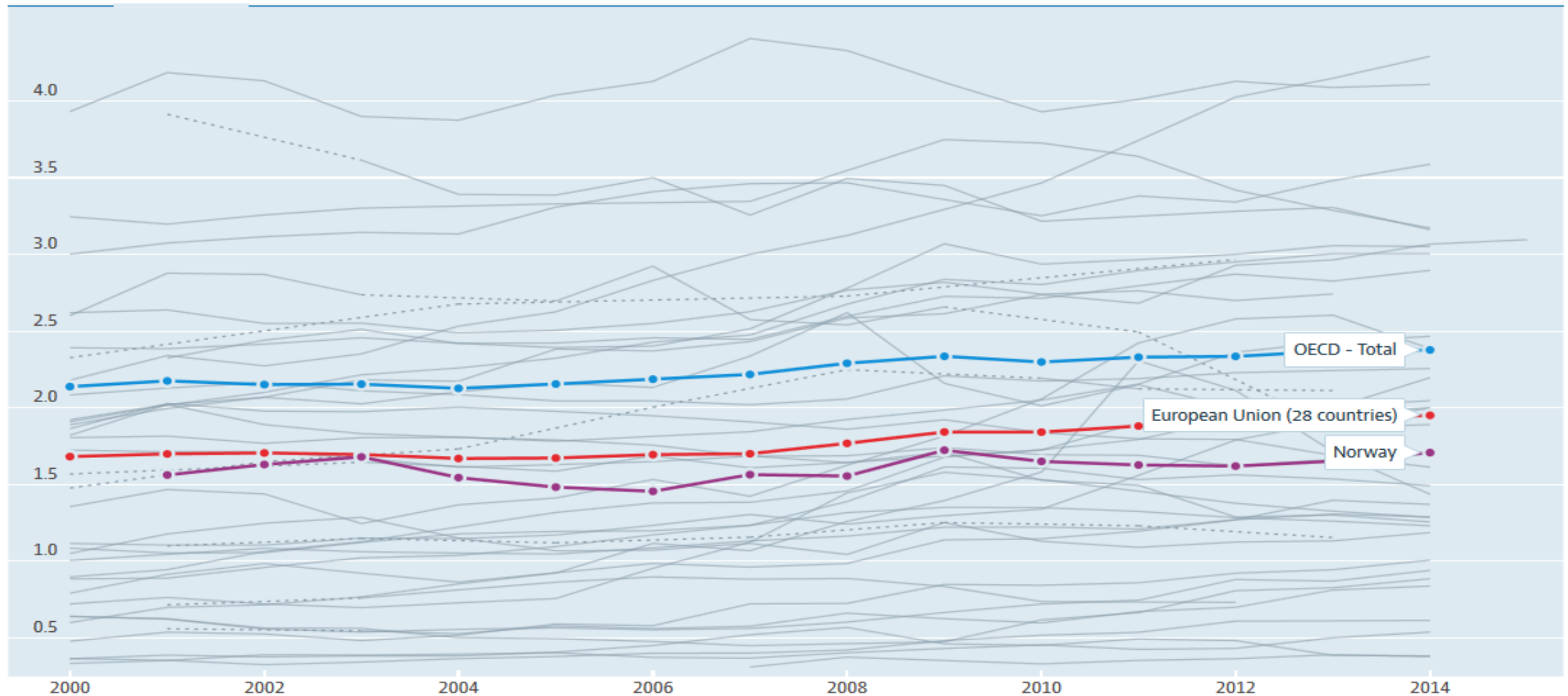
OECD Data



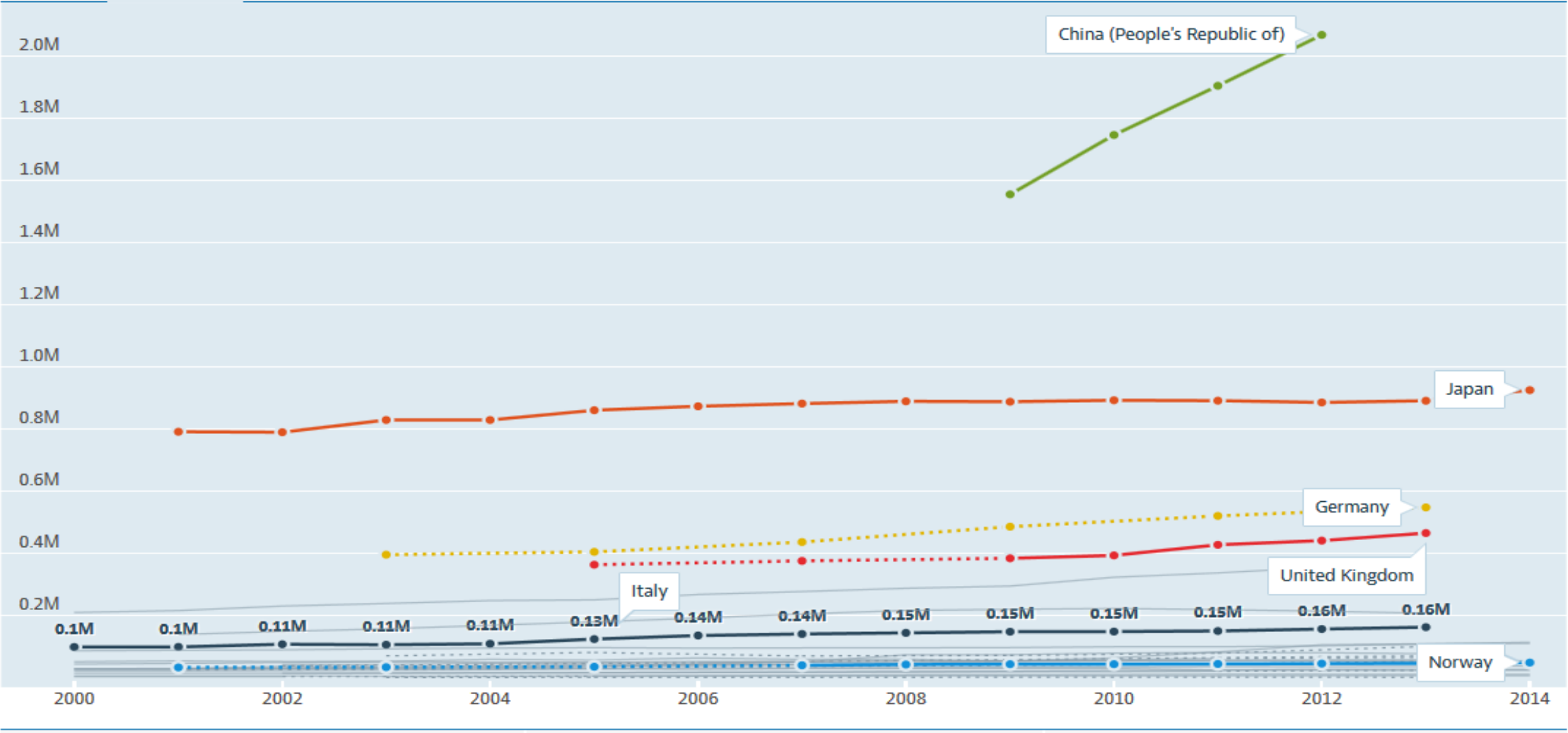
# Gross domestic spending on R&D Total, % of GDP, 2000 – 2015

Source: Main Science and Technology Indicators

OECD Data



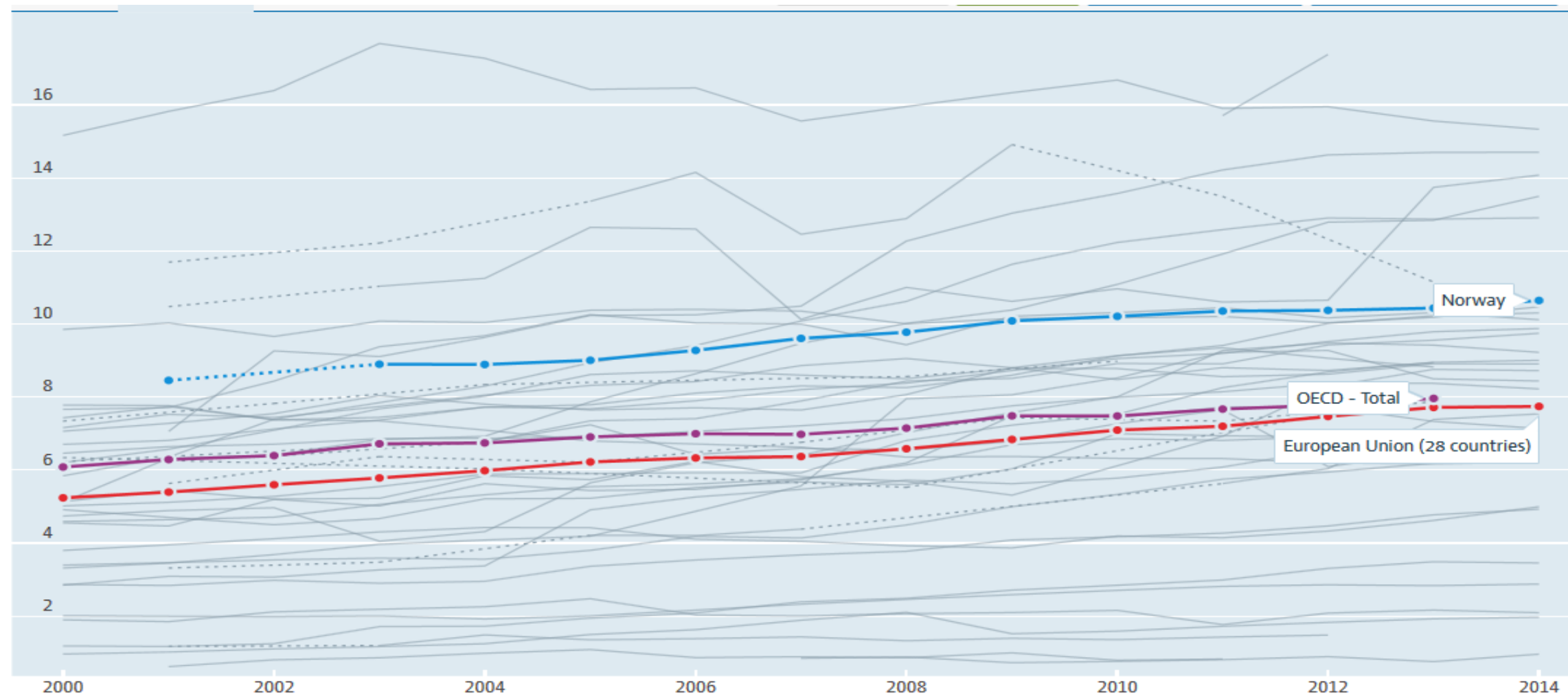
OECD Data



# Researchers Total, Per 1 000 employed, 2000 – 2014

Source: Main Science and Technology Indicators

*OECD Data*



# Norway's Strategy for research and innovation cooperation with the EU

- Two per cent of the competitive funds in Horizon 2020 shall go to Norwegian actors.
- The ambition will require more than a 60 per cent increase in the level of participation compared with FP7.
- ***NTNU expected to contribute substantially.***

## Strategy

Strategy for research and  
innovation cooperation with the EU

Horizon 2020 and ERA

# NTNU's International Action Plan 2014 - 2017

Participation in Horizon 2020 is the number one priority.

*Horizon 2020 participation important for the quality and relevance of NTNU's research.*





# NTNU's Horizon 2020 ambitions

## Goal:

1 billion NOK from  
Horizon 2020  
(110 million Euro)

## Current status:

300 million NOK from  
Horizon 2020  
(26 million Euro)

- 559 proposals
- 62 projects

Total budget  
of 62 projects  
is 310 million  
Euro





NTNU's research groups are active in all pillars and most programmes across Horizon 2020.



# The NTNU Horizon 2020 instruments

**50 million NOK/year (5,5 million Euro) in support measures to participate in Horizon 2020**

- Support for positioning
- Support for project development
- Incentives for projects
- Top-up funding for Marie Skłodowska Curie Fellows
- Horizon 2020 Gold Card Groups
- Administrative support services
- NTNU Brussels Office
- Secondment in the JPI Oceans secretariat



I... NEED...  
HEEEEEEEEEELLLL!

# A long-term European strategy for NTNU's research groups

- Identify competences and comparative advantages
- Identify relevant European initiatives and programmes
- Identify important players and actors
- Participate in relevant networks and alliances
- Allocate resources, assign responsibilities
- Identify relevant calls, apply, and win projects







**Thank you for your attention.**