

How to import references from SCOPUS

! Make a back up of your EndNote library before doing major changes or imports to EndNote!

Direct import:

Scopus Search Sources Alerts Lists Help ▾ SciVal ▸ Register > Login ▾

75 document results View secondary documents View 12 patent results View 56 DataSearch

TITLE-ABS-KEY (euscopus)

Edit Save Set alert Set feed

Search within results... 🔍

Analyze search results Show all abstracts Sort on: Date (newest) ▾

1 ☐ All 2 Export Download View citation overview View cited by Add to List ...

	Document title	Authors	Year	Source	Cited by
<input type="checkbox"/> 1	The male sexual apparatus in the order Scorpiones (Arachnida): A comparative study of functional morphology as a tool to define hypotheses of homology	Monod, L., Cauwet, L., González-Santillán, E., Huber, S.	2017	Frontiers in Zoology 14(1),51	1
View abstract ▾ View at Publisher Related documents					
<input checked="" type="checkbox"/> 2	Sexual dimorphism in venom gland morphology in a sexually stinging scorpion	Sentenská, L., Graber, F., Richard, M., Kropf, C.	2017	Biological Journal of the Linnean Society 122(2), pp. 429-443	0
View abstract ▾ View at Publisher Related documents					
<input checked="" type="checkbox"/> 3	Ecology and biogeography of the endemic scorpion Euscopus carpathicus (Scorpiones: Euscorpidae): a multiscale analysis	Gherghel, I., Sotek, A., Papeş, M., Strugariu, A., Fusu, L.	2016	Journal of Arachnology 44(1), pp. 88-91	1
View abstract ▾ View at Publisher Related documents					
<input type="checkbox"/> 4	How to stay on mummy's back:	Wolff, J.O., Huber, S.J.,	2015	Arthropod Structure and	5

Tick the references that you want to export or click "All" (1) if you want to import the whole list. Click "Export" (2).

Choose format **RIS** (3).

Choose additional data that you want to be included in the import (4). Abstract, keywords etc. may be useful data in addition to the default selection.

Choose "Export" (5) to start the export.

Export document settings ⓘ

You have chosen to export 2 documents

Select your method of export

☐ MENDELEY ☐ RefWorks ☐ SciVal ☒ **3** RIS Format ☐ CSV ☐ BibTeX ☐ Plain Text

EndNote, Reference Manager Excel ASCII in HTML

What information do you want to export?

☒ Citation information ☐ Bibliographical information ☒ Abstract & keywords ☐ Funding details ☐ Other information

☒ Author(s) ☒ Affiliations ☒ Abstract ☐ Number ☐ Tradenames & manufacturers

☒ Document title ☐ Serial identifiers (e.g. ISSN) ☒ Author keywords ☐ Acronym ☐ Accession numbers & chemicals

☒ Year ☐ PubMed ID ☒ Index keywords ☐ Sponsor ☐ Conference information

☒ Source title ☐ Publisher ☐ Funding text ☐ Include references

☒ volume, issue, pages ☐ Editor(s) ☐ Language of original document

☒ Citation count ☐ Correspondence address

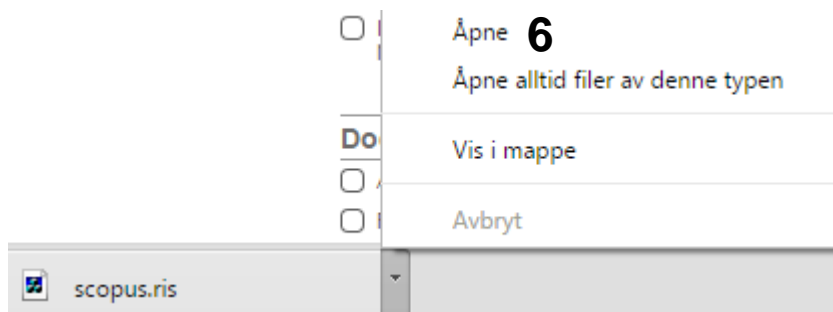
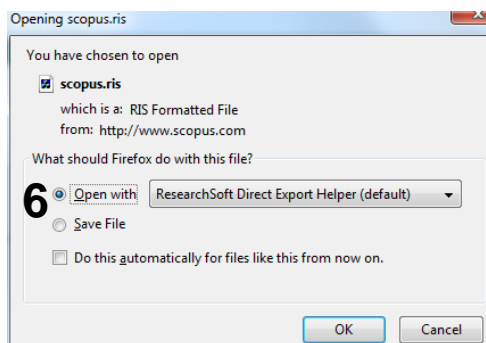
☒ Source & document type ☐ Abbreviated source title

☒ DOI

4

5

Cancel Export



Vil du åpne eller lagre **scopus.ris** fra **scopus.com**?

6

Åpne

Lagre

Avbryt

x

What happens next depends on your web browser. The references may be imported directly to EndNote, or the import file may be temporary saved. If the latter happens, get the file opened **(6)** and the references will be imported to EndNote. If you use Safari on a Mac, the import file will be stored. Find the downloaded file and drag it to the EndNote icon at the bottom of the screen. This will add the imported references to your library.

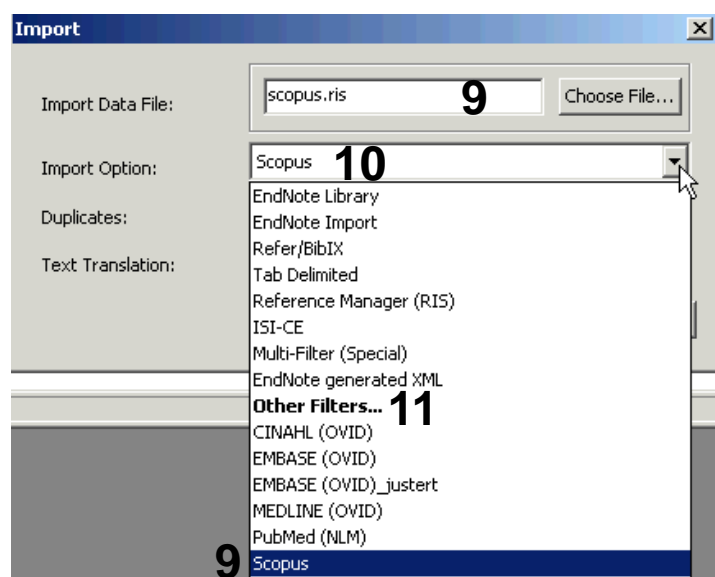
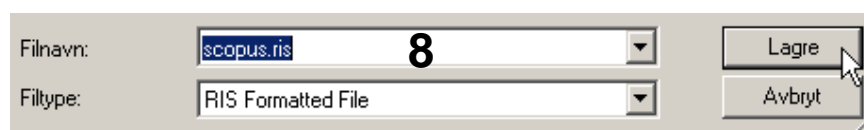
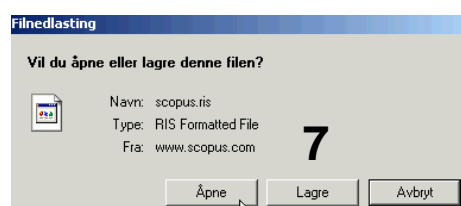
EndNote will now only list the imported references. We recommend that you check a couple of references to see that the import was correct. In our experience, imports from Medline are usually correct. NB! Non-article references and references from SCOPUS' additional search tools **"More"**, **"Web"** og **"Patents"** may be imported with errors and need to be checked and manually adjusted if necessary.

Choose **"Show all references"** from the **"References"** menu.

Import a temporary stored file:

If you need to store the import file before adding it to your library (e.g. you do not have EndNote on the computer you are working on), you can import a temporary import file later.

Follow the instructions for direct import, but choose **"Save" (7)** in stead of **"Open"**. Choose file name and location and use the default file format **(.ris) (8)**. The layout of these windows will vary from dependent on the web browser you are using.



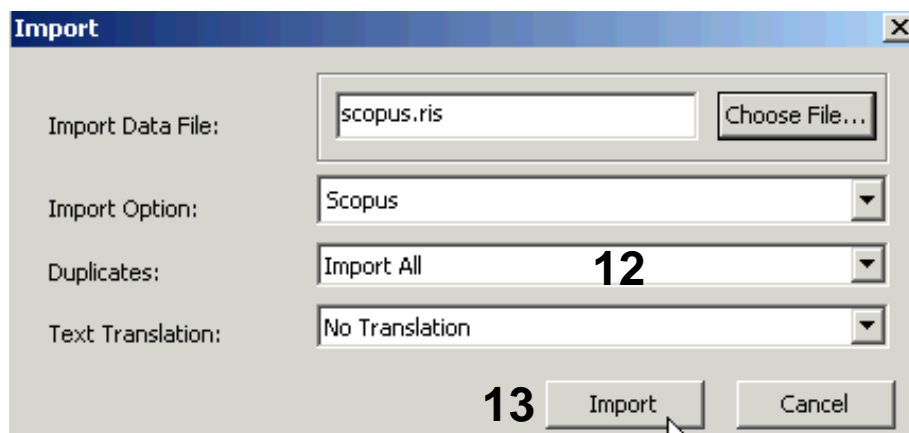
Open EndNote and choose **"Import"** from the **"File"** menu.

Choose correct import file **(8)**.

Choose import filter **SCOPUS (9)** from the list. A correct import filter is necessary for the references to be added correctly into your library.

The first time **"Other filters" (10)** has to be chosen to find the correct filter from the list of available filters.

Click **"Choose"**.



Choose **"Import all"** from the **"Duplicate-menu"** (12) if you want to import all references in the file. Choose **"Discard duplicates"** if you want EndNote to try to discard duplicates in the import file during the import to the library. Duplicates can also be identified and removed later through the main library duplicate check.

Choose **"Import"** (13) to add the references to your library.

EndNote will now only list the imported references. We recommend that you check a couple of references to see that the import was correct. In our experience, imports from Medline are usually correct. NB! Non-article references and references from SCOPUS' additional search tools **"More"**, **"Web"** og **"Patents"** may be imported with errors and need to be checked and manually adjusted if necessary.

Choose **"Show all references"** from the **"References"** menu.