



Orientering fra den faglige virksomheten



Overlege Dr.Med Bård Kulseng
Regionalt senter for behandling av sykelig overvekt
St. Olavs Hospital og NTNU

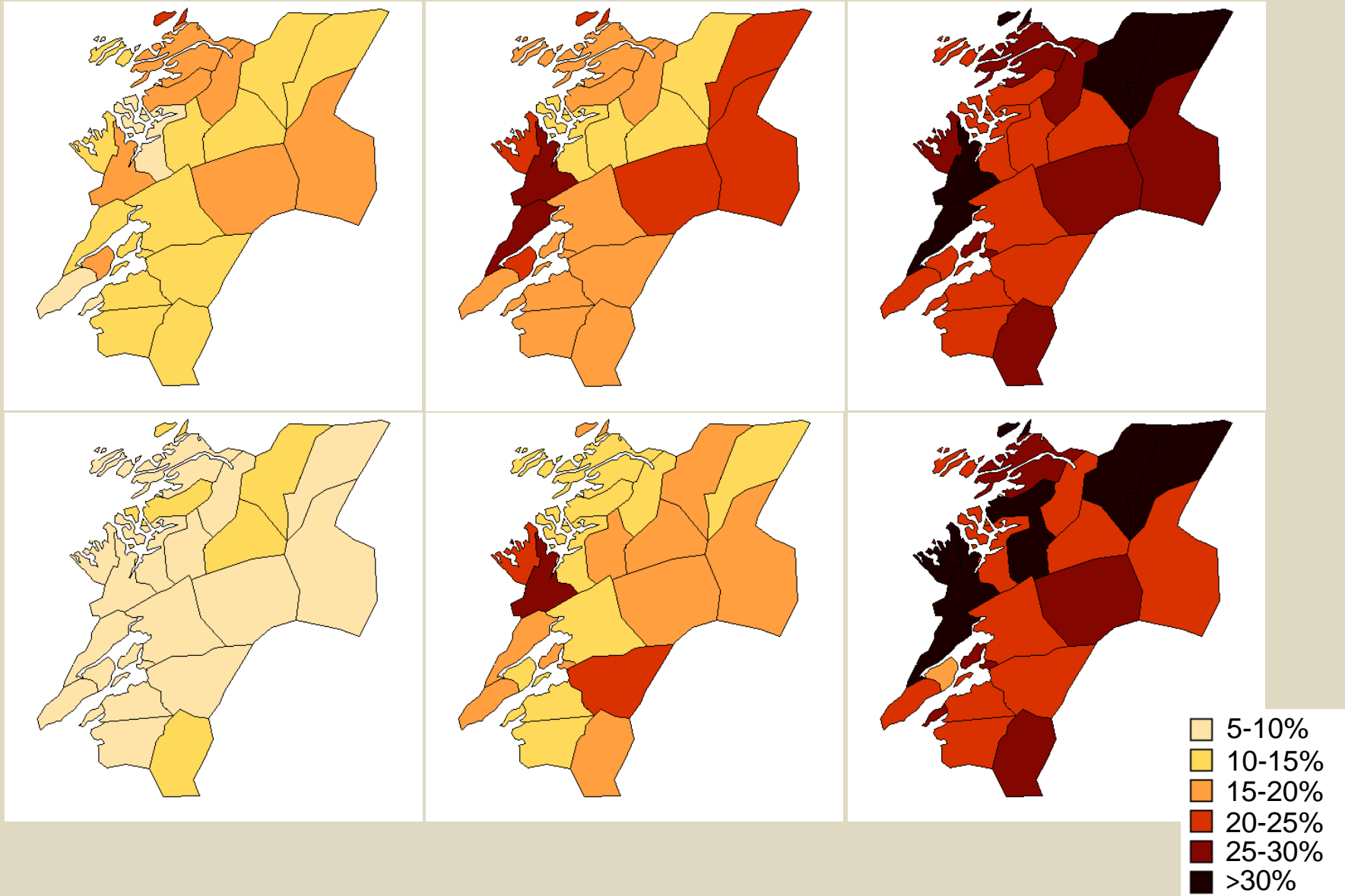


20-69 år, prevalens BMI>30

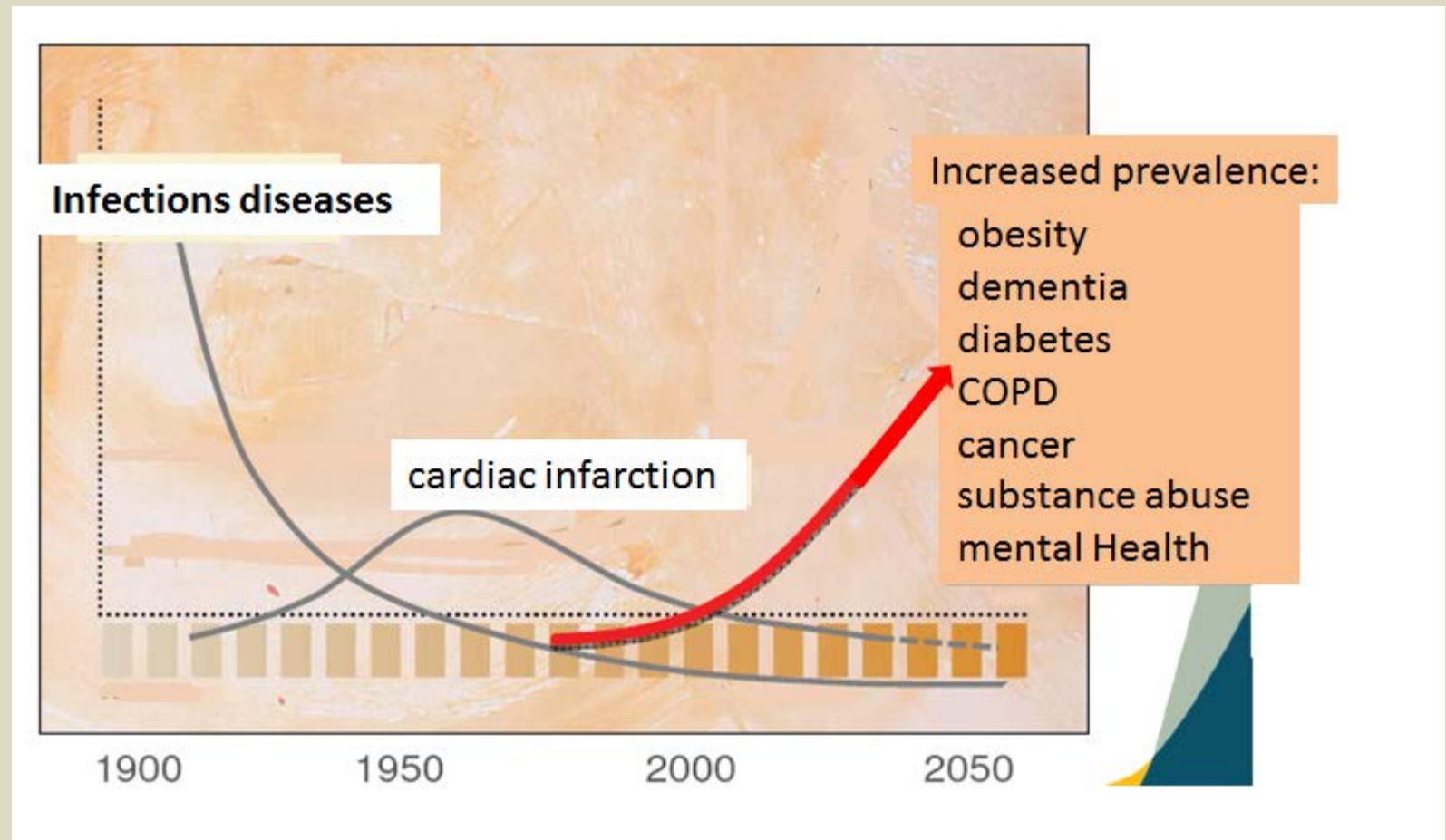
HUNT 1: 1984-1986

HUNT 2: 1995-1997

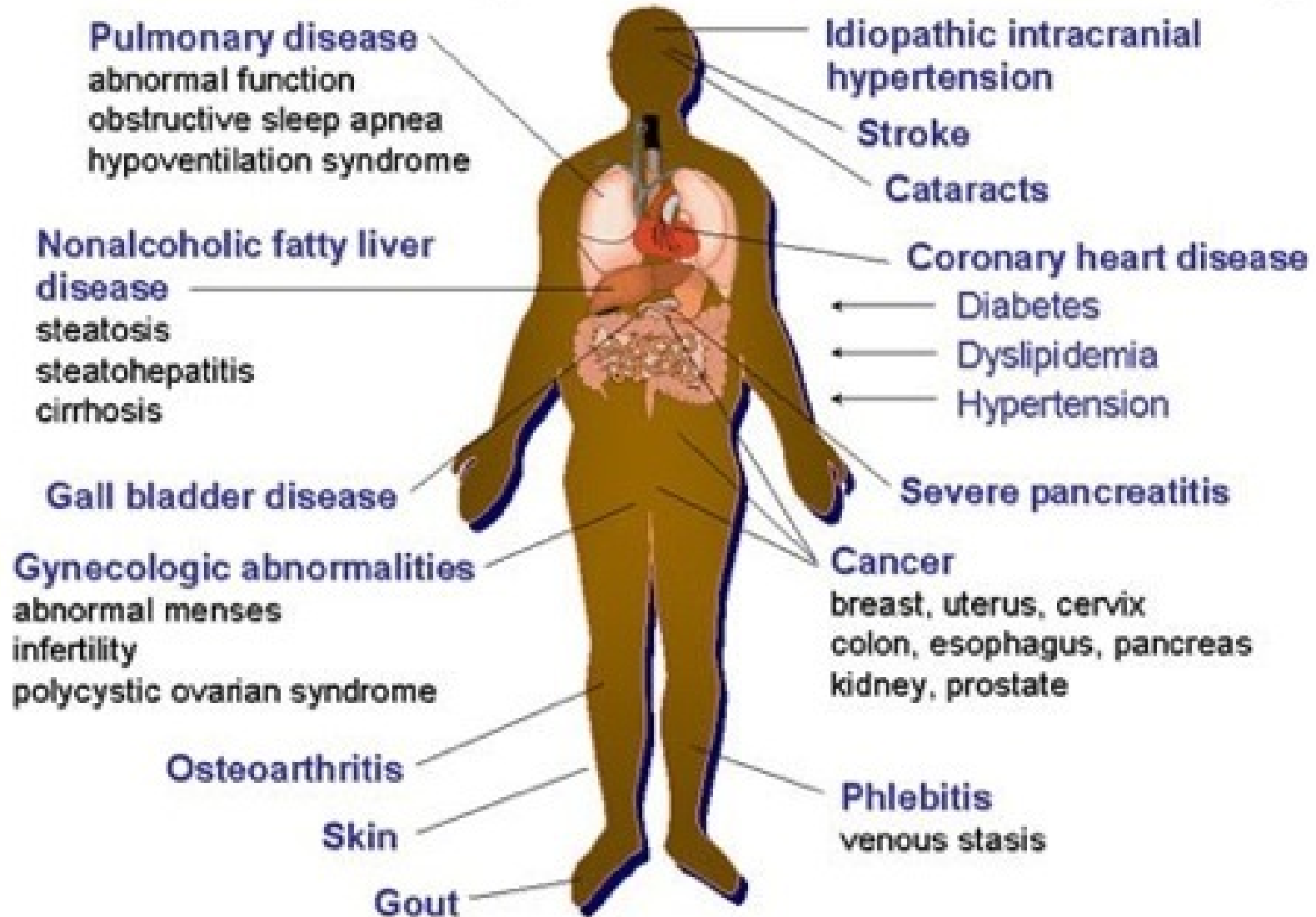
HUNT 3: 2006-2007



Changes in the incidence and disease panorama.
Do we have a health care system that is adapted to new challenges?



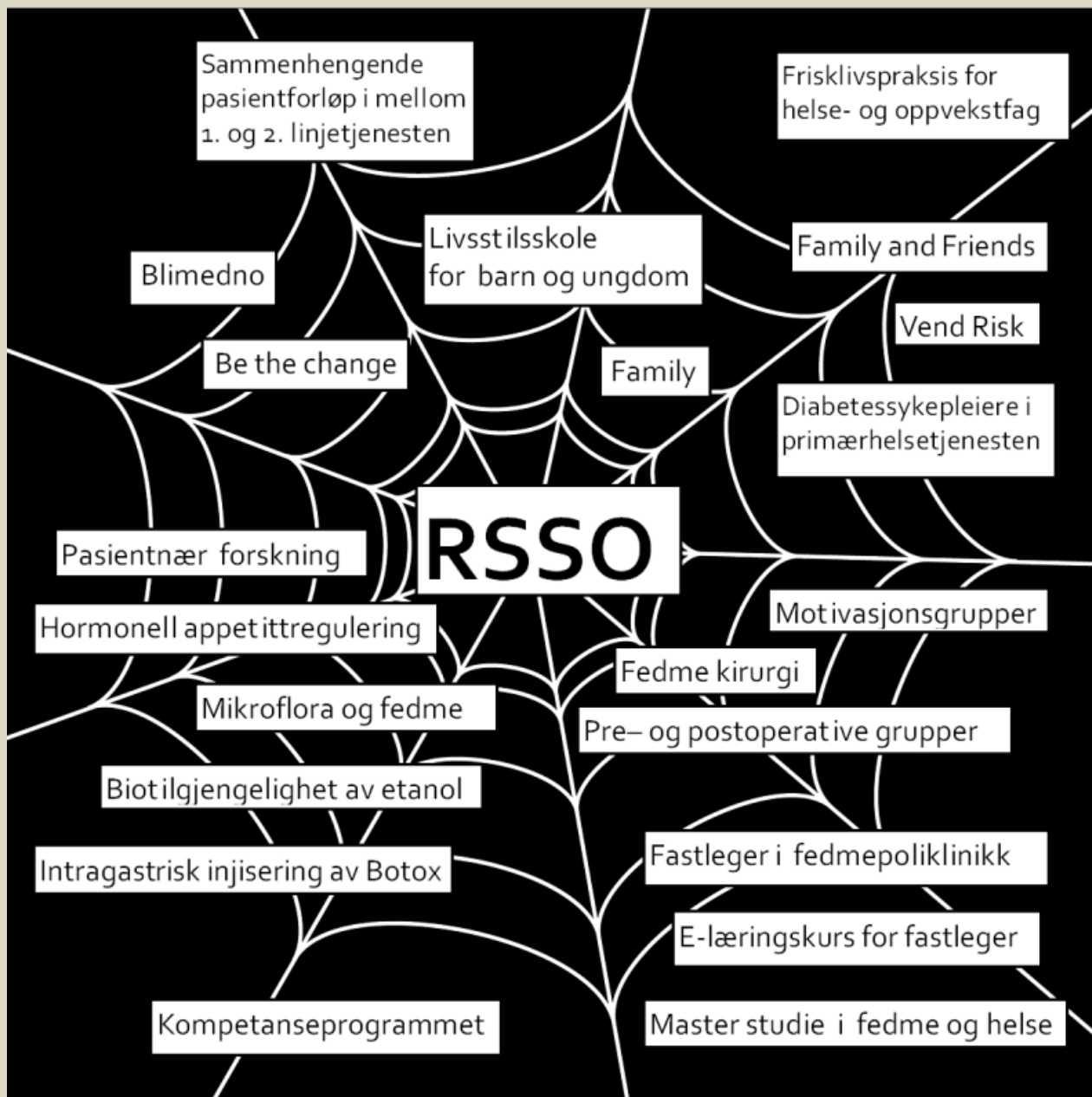
Medical complications of Obesity



Additional costs linked to obesity (the specialist health services)

- Sør-Trønderne (300 000 inhabitants), between 150 and 200 million per year.
- Midt-Norge (695,000 inhabitants), between 350 and 450 million per year.

Kalkulerte data fra Vidar Halsteinli

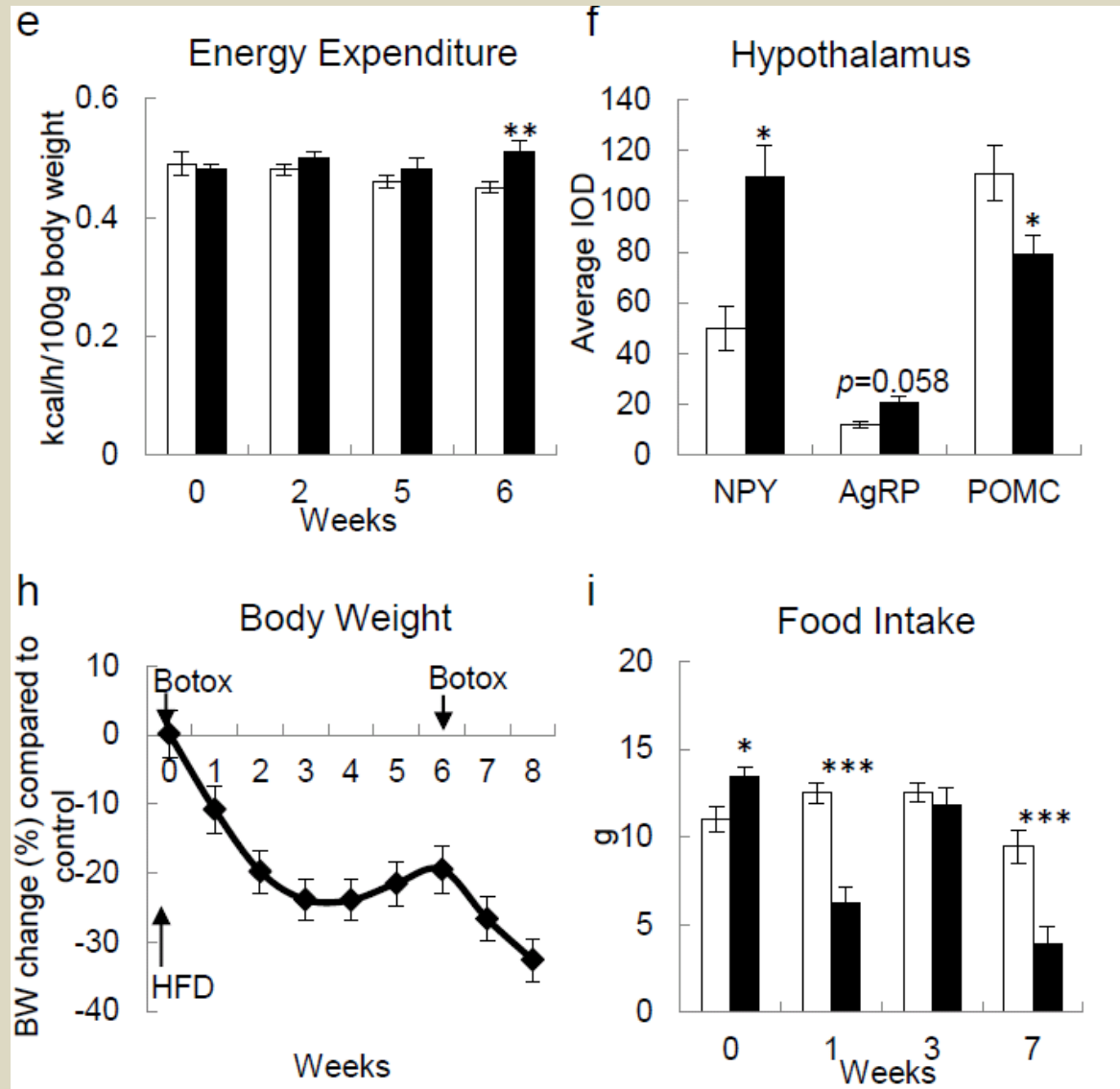


Pågående prosjekter

- Botox studien
- 4 EU Søknader
- Individtilpasset behandling
- Inflammasjon og fedme
- Appetitt regulering
- Tarmbakterie prosjekter
- Fedmebehandlinger samhandlingsprosjekter
- Styrk prosjektene
- Kompetanseprosjekter
- BLIMEDNO prosjektene
- Kunnskapsportalen



The gastric vagus nerve as a target for obesity treatment



NTNUs prioriterte EU-satsningsområde mot Horisont 2020: Fedme, sunt kosthold, sunn livsstil



Horisont 2020 - 3 pilarer

- Excellent science, Industrial leadership, Societal challenges

- Excellent science

- ERC (European Research Council)

- 2 kandidater for starting grant fedmerelatert, 2015

- MSCA (Marie Skłodowska Curie Actions)

- ITN (Innovative Training Network)

- ETN (European Training Network) - tverrfakultært nettverk innen fedme?

ETN er multipartner forsker-trenings-nettverk med minst 3 og vanligvis 6-10 deltakere, fra både akademisk og ikke-akademisk sektor, fokus på utveksling og forskeropplæring

- RISE (Research and Innovation Staff Exchange)

Societal challenges, PHC

- **PHC (Personalising health and care)**
- PHC-01 Understanding health, ageing and disease: determinants, risk factors and pathways
 - **Duan Chen (IKM,RSSO), koordinator – Food4 Ageing**
 - **Terje Espevik (IKM, RSSO), koordinator – Entcard**
 - **Metrics analysis of living behavior to identify determinants and pathways of healthy ageing (MAIDAN) (ITEM NTNU coordinator and St. Olavs Hospital partner (RSSO))**
- PHC-03 Understanding common mechanisms of diseases and their relevance in co-morbidities
 - **Duan Chen (IKM), partner (dyrestudier, atherosklerose og kreft)**
- PHC-05 Health promotion and disease prevention: translating ‘omics’ into stratified approaches
 - **Martin Kuiper (NT, IBI, RSSO), koordinator – DiaMetabo**

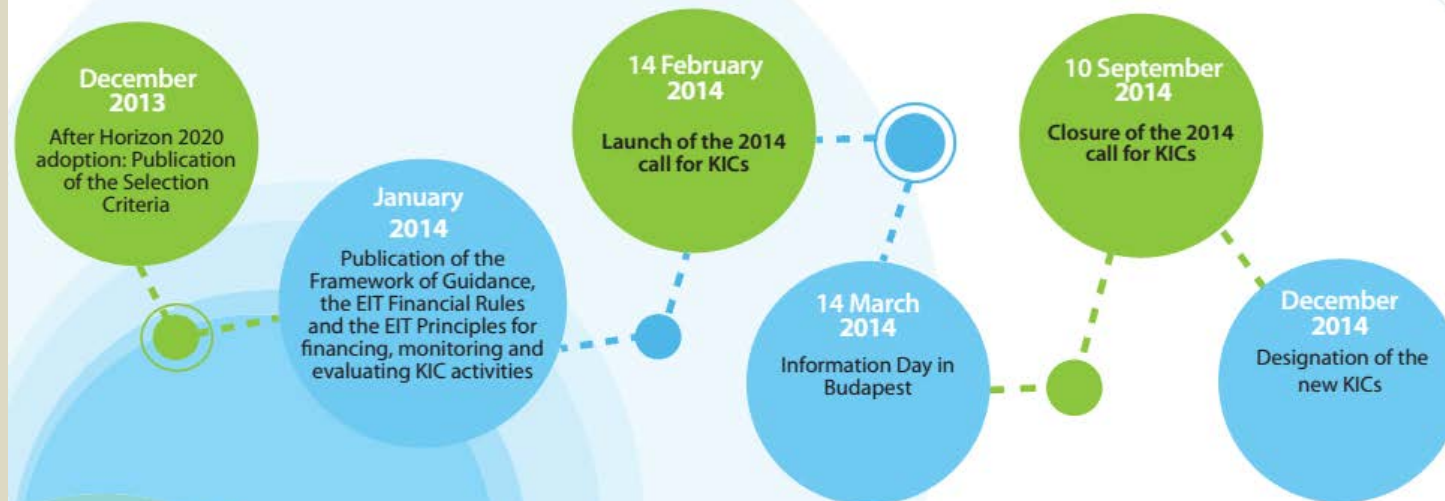
Societal challenges, PHC forts.

- PHC-18 Establishing effectiveness of health care interventions in the paediatric population
 - **Rønnaug Ødegård (RSSO/LBK), koordinator – Tailored treatment in childhood obesity**

The European Institute of Innovation and Technology (EIT) 2014 Call for Knowledge and Innovation Communities (KICs) proposals Innovation for healthy living and active ageing



INDICATIVE TIMELINE FOR THE SELECTION AND DESIGNATION OF THE NEW KICs



eit.europa.eu

eit European Institute of
Innovation & Technology

The EIT is a body of the EU based in Budapest, Hungary.



Collaborations

NTNU

Det medisinske fakultet

Fakultet for naturvitenskap og teknologi

Fakultet for samfunnsvitenskap og teknologiledelse

Fakultet for informasjonsteknologi, matematikk og elektroteknikk

Centre of Obesity

St. Olavs Hospital

Trondheim University Hospital

Obesity Outpatient Clinic

St Olavs Hospital

University of Leeds



40 municipalities in Midt-Norge



MURITUNET – Senter for Meistring og Rehabilitering



Duan Chen's collaborations

1. Columbia University College of Physicians and Surgeons
2. MIT
3. Harvard University
4. Yale University
5. Oxford University
6. Aberdeen University
7. Technical University of Munich
8. Hammersmith Medicines Research London
9. Copenhagen University
10. Gothenburg University
11. Norwegian University of Life Sciences
12. University of Bergen
13. Nanjing Medical University

